

Caterpillar MTL 277c Dual Suspension

RED ROO SOLUTIONS

MACHINE PRODUCT & PRICE LISTING



*all prices current as June 1st 2010, pricing subject to change without notice, please confirm prices before ordering
all prices are inclusive of gst*

Larry Lugs and Field Kits

The quick, reliable and inexpensive way to keep your machine going. Larry Lugs simply bolt straight on to replace missing and damaged drive lugs. Don't replace perfectly good tracks, save thousands of dollars and fit Larry Lugs.

Field Kits - contain everything you need to correctly fit Larry Lugs - Track Template, Carbide Tungsten Grinding Wheel, high quality drill bit, hex key and instructions. The Field Kit is a one off purchase and comes with a number of Larry Lugs as indicated and then you just Larry Lugs as you need them.

LL05	5 Larry Lugs inc high grade Bolts & Washers	\$ 192.50	FK05	5 Larry Lug Field Kit	\$ 357.50
LL10	10 Larry Lugs inc high grade Bolts & Washers	\$ 385.00	FK10	10 Larry Lug Field Kit	\$ 550.00
LL15	15 Larry Lugs inc high grade Bolts & Washers	\$ 577.50	FK15	15 Larry Lug Field Kit	\$ 742.50
LL20	20 Larry Lugs inc high grade Bolts & Washers	\$ 726.00	FK20	20 Larry Lug Field Kit	\$ 891.00
LL30	30 Larry Lugs inc high grade Bolts & Washers	\$ 1,089.00	FK30	30 Larry Lug Field Kit	\$ 1,254.00
LL50	50 Larry Lugs inc high grade Bolts & Washers	\$ 1,485.00	FK50	50 Larry Lug Field Kit	\$ 1,650.00

For Larry Lug quantities of 100+ please contact us directly

Cat MTL 277c Dual Parts and Descriptions

8 x 15" Inner Front & Rear wheels - Part #BW7

8 x 15" Outer Front & Rear Wheels - Part# BW8

32 x 10" bogie (Intermediate) wheels Consisting of 16 x BW9 & 16 x BW10





Sprocket Sleeves - Inners (SIS39) & Outers (SOS39) - there are 36 per side, 72 per machine

Larry Lugs - Part# LL1 - supplied with 2 high grade bolts and washers per Lug

Outer Lugs - Part# OL1 - supplied with 2 high grade bolts & washers per Lug

DT5 - Track Drill Template

277c machines come in dual or single level suspension, it is important that you know which your machine is as the wheel arrangement is different for each

	BW7 Inner Idler Wheel		BW8 Outer Idler Wheel		BW9 Inner Bogie Wheel		BW10 Outer Bogie Wheel
BW7	Aluminium Alloy Inner FRONT & REAR Wheel - Single 15"				<i>price / Single Wheel</i>	\$ 209.00	
BW8	Aluminium Alloy Outer FRONT & REAR Wheel - Single 15"				<i>price / Single Wheel</i>	\$ 231.00	
BW9	Aluminium Alloy Inner INTERMEDIATE Wheel - Single 10"				<i>price / Single Wheel</i>	\$ 93.50	
BW10	Aluminium Alloy Outer INTERMEDIATE Wheel - Single 10"				<i>price / Single Wheel</i>	\$ 110.00	
F & R	Front and Rear Wheels		16 wheels		<i>price Wheel Group TKD</i>	\$ 3,344.00	
FMS	Aluminium Alloy Wheel - Full Machine Set		48 wheels		<i>price Wheel Group TKD</i>	\$ 6,437.20	
HC5	Hydraulic Tensioners - 1 x pair with grease nipple		2 per machine		<i>price / pair</i>	\$ 506.00	
SOS39	Composite Drive Sprocket Outer Sleeves		72 per machine		<i>price FMS</i>	\$ 633.60	
SIS39	High Grade 4140 metal Drive Sprocket Inner Sleeves		72 per machine		<i>price FMS</i>	\$ 792.00	
Larry Lugs	As per Larry Lug and Field Kit pricing above - standard Larry Lugs						
OL1	Outer Lugs as per standard Larry Lugs						
DT5	Track Drill Template for Larry Lug fitting						\$ 44.00

mike@redroosolutions.com.au

Ph 0418 261 219

norm@redroosolutions.com.au

Ph 0418 261 219

www.redroosolutions.com.au

RED ROO SOLUTIONS

MACHINE PRODUCT & PRICE LISTING

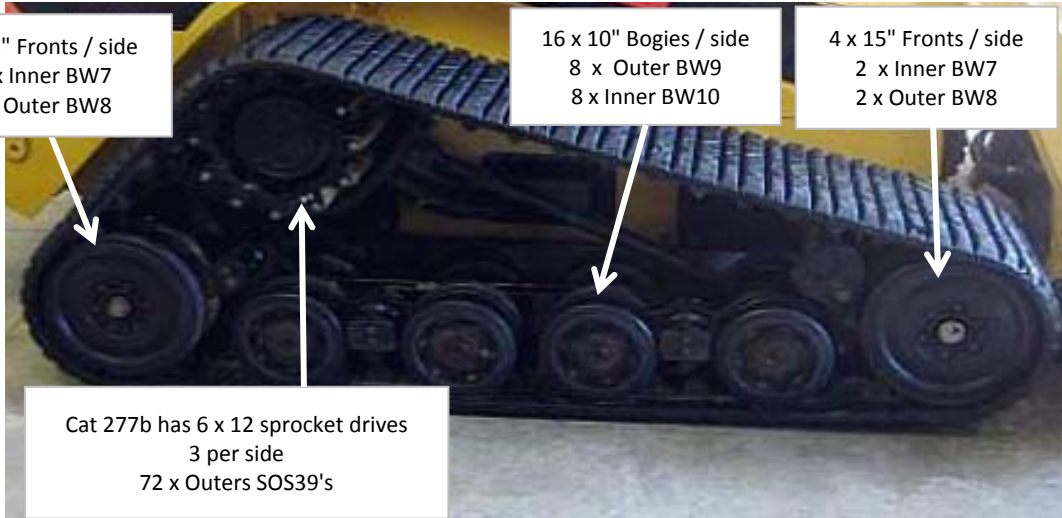


Caterpillar MTL 277c Dual Suspension Undercarriage Specs

4 x 15" Fronts / side
2 x Inner BW7
2 x Outer BW8

16 x 10" Bogies / side
8 x Outer BW9
8 x Inner BW10

4 x 15" Fronts / side
2 x Inner BW7
2 x Outer BW8



Cat 277b has 6 x 12 sprocket drives
3 per side
72 x Outers SOS39's

Red Roo Solutions Customer Order Form



Please supply to

Business Name _____

Contact Name _____ Phone _____ Fax _____

email _____ Mobile _____ Date _____

Delivery Address _____ Pcode _____

Billing Address _____ Pcode _____

Which machine do you have or require parts for

RC30	RC50	RC60	RC85	RC100	SR70	SR80	MD70	2800	2810
4810	PT30	PT50	PT60	PT70	PT80	PT100	- Other Please detail		
CAT247B	CAT257B	CAT267B	CAT277B	CAT287B	CAT247B	CAT257B	CAT277C	CAT287C	CAT297C

if you have a Cat C series machine is it dual (4 rows idlers) or single (5 rows of idlers) level suspension

Part #	Product Description	Quantity	Price	Total

DELIVERY OPTIONS

Red Roo Solutions ships all stock from our Gatton, QLD warehouse.

For smaller orders (to 5kgs) we use Australia Post Express Post bags. These allow for 2 - 3 days to most East Coast Centres and 3 - 4 days to FNQ, WA, Tas, NT and rural locations.

For heavier orders such as wheels we will quote depending on the location.

For large orders and tracks we use Air Road Direct

We are happy to use your preferred freight company

URGENT ORDERS

Red Roo Solutions will always make every effort to assist with urgent orders, however overnight orders just may not be possible, particularly to locations outside of major East Coast centres.

Please DO NOT leave Larry Lug orders until you have extensive damage, replacing a single lug as soon as it drops will save you a lot of downtime, money and heartache

Overnight or urgent courier orders can result in hundreds of dollars in freight charges and will require credit card payment via the phone before goods will be sent

CREDIT POLICY

Red Roo Solutions does not provide credit accounts.

Bad debt provisions & trade debtors management costs would add an estimated 15% to our prices.

We are committed to maintaining the lowest possible prices for customers.

Goods Total	
Freight	
TOTAL	

**Westpac - Direct Deposit
Red Roo Solutions**

Payment Options
Credit Card via Phone, Direct Deposit, Cheque - goods sent **only** on

PO Box 452
Gatton, QLD 4343

Fax order form to 07 5462 1443

Contacts: Mike 0418 261 219 or Norm 0409 328 758

Red Roo Solutions P/L A/T/F Red Roo Trust A.B.N. 22 516 258 700 - check us out online

www.redroosolutions.com.au